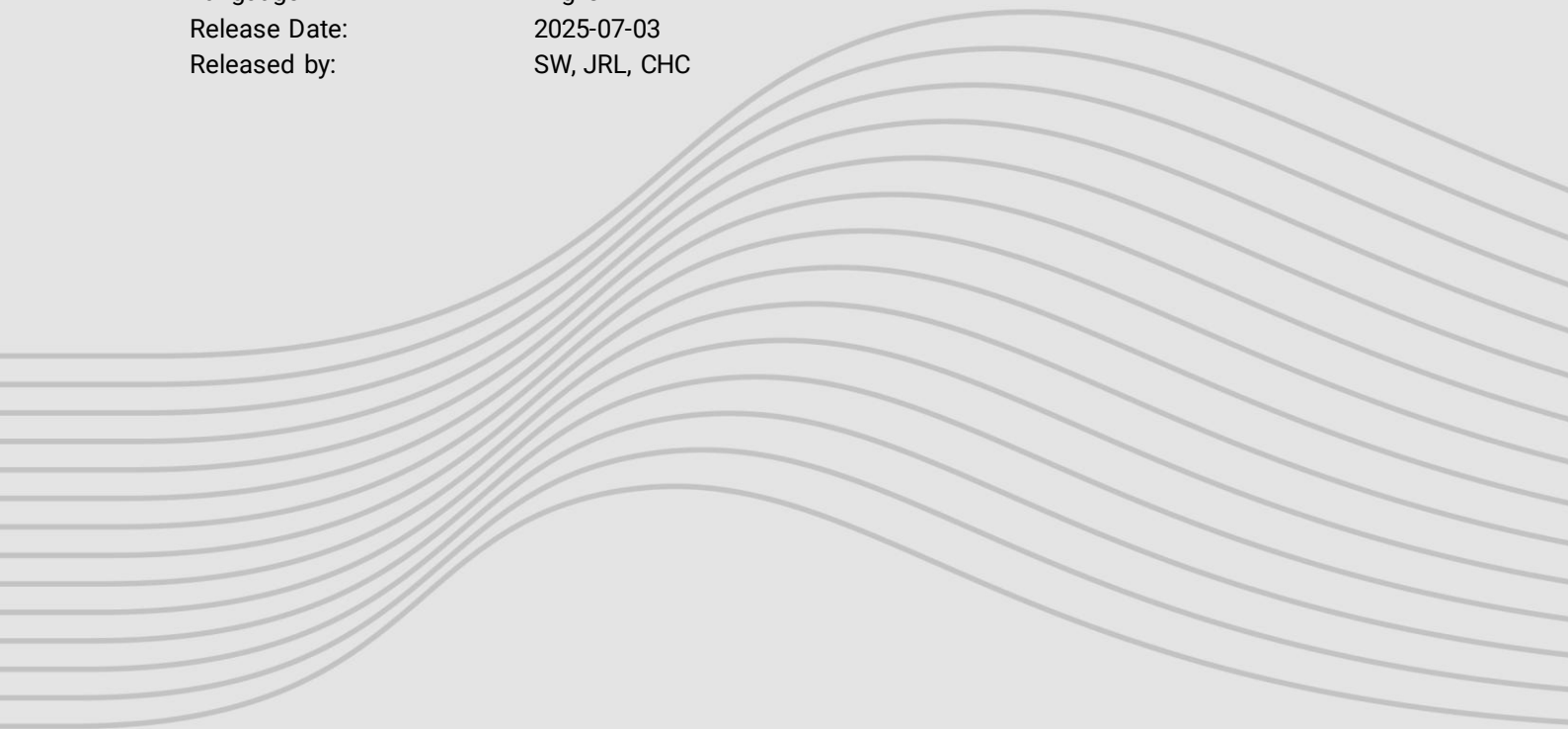


## APPENDIX

### INSTALLATION INSTRUCTION

# Installation ELLE® Onshore around obstacles

Product Version:	All
Document ID:	LE-I039
Document Revision:	2.0
Language:	English
Release Date:	2025-07-03
Released by:	SW, JRL, CHC



## Imprint

### **Polytech A/S**

Industrivej 75  
6740 Bramming  
Denmark

Phone: +45 75 10 10 26

[www.polytech.com](http://www.polytech.com)

Company registration number: 10403782

©2025 Polytech A/S

Distribution and reproduction of this document, exploitation and communication of its contents are prohibited unless expressly permitted. Violations will result in liability for damages. All rights reserved in the event of patent, utility model, or design registration.

All rights reserved.

Brand names and protected trademarks are the property of their respective owners. The naming of brand names and protected trademarks has only descriptive character. Named trademarks are not part of any partnership or cooperation with Polytech.

## Table of Content

<b>1. General Information .....</b>	<b>4</b>
1.1 Purpose.....	4
1.2 Change Description .....	4
1.3 Safety.....	4
1.4 Icons and Notes .....	4
1.5 Required Documentation .....	5
1.6 Abbreviations .....	5
<b>2. Preparation.....</b>	<b>6</b>
2.1 Environmental Conditions .....	6
2.2 Tools and Consumables .....	6
<b>3. Installation.....</b>	<b>7</b>
3.1 Mark up the ELLE® Onshore.....	7
3.2 Punching & cutting.....	8
<b>4. Technical Support .....</b>	<b>9</b>

# 1. General Information

## 1.1 Purpose

This instruction is to be used when there are obstacles in the installation area of *ELLE® Onshore*. The description is based on a lightning receptor, but the process and tolerances can also be used for other obstacles.





## 1.2 Change Description

The table below describes changes compared to the previous revision of the document.

Section	Description
Section 1.5 Section 1.5	Version 2.0 Adding: SDS ELLE Onshore EN 2025.05.26 V0 Removing: 3M™ Wind Tape Adhesion Promoter W9910-1
All	New document. Version 1.0





## 1.3 Safety

Wear PPE as defined in the table below.

	<b>For all tasks</b> Wear foot protection.
	<b>For all tasks</b> Wear eye protection.
	<b>For all tasks</b> Wear protective gloves.
	<b>For tasks where sufficient venting is not possible</b> Wear respiratory protection. ■ Recommended filter type: A2, P2.

## 1.4 Icons and Notes

The table below defines the meaning of icons that appear in this document.

Icon	Definition
	<b>Caution or Warning</b> Details about risk of personal injury.
	<b>Note</b> Details about risk of property damage.
	Reference to additional documentation.
	Details about time constraints.

## 1.5 Required Documentation

The table below lists other required documentation.

<b>Safety Data Sheet</b>	<ul style="list-style-type: none"><li>■ IPA Sprit 95% (minimum) Polytech</li><li>■ SDS ELLE Onshore EN 2025.05.26 V0</li></ul>
<b>Technical Data Sheet</b>	<ul style="list-style-type: none"><li>■ LE-D043 ELLE Onshore Technical Data Sheet</li></ul>

## 1.6 Abbreviations

The table below defines the abbreviations used in this document.

Abbreviation	Full Form
IPA	Isopropanol Alcohol
LE	Leading Edge
OEM	Original Equipment Manufacturer
PPE	Personal Protective Equipment
PS	Pressure side of the blade
SS	Suction side of the blade

## 2. Preparation

### 2.1 Environmental Conditions

The table below defines the temperature and humidity requirements during installation.



Refer to Technical Data Sheets for storage and transportation requirements.

Property	Value	Unit
Surface temperature	10 ... 35	°C
	50 ... 95	°F
Relative humidity	0 ... 100	%

### 2.2 Tools and Consumables

The table below defines the required tools and consumables.

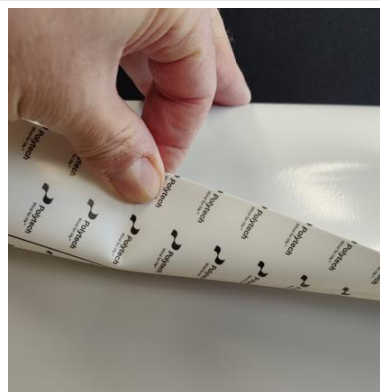
Tools	
Item	Type
Scissor, alt. knife	-
Permanent marker	Carbon free
Consumables	
Item	Type
Suitable protective material	See: <i>Section 3.2 step 1</i>

### 3. Installation

#### 3.1 Mark up the *ELLE® Onshore*

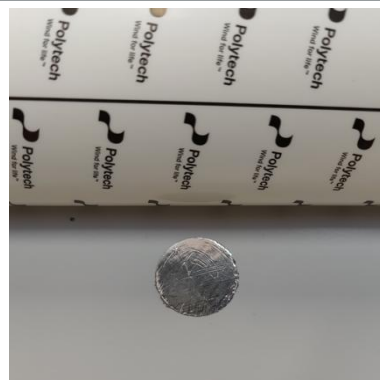
##### Step 1

Install the *ELLE® Onshore* according to *LE-I038-Application\_of\_ELLE\_Onshore Up-tower* or *LE-I058-Application\_of\_ELLE\_Onshore Factory* and stop the installation after installing the center area of *ELLE® Onshore*.



##### Step 2

Locate the lightning receptors that are in the installation area.



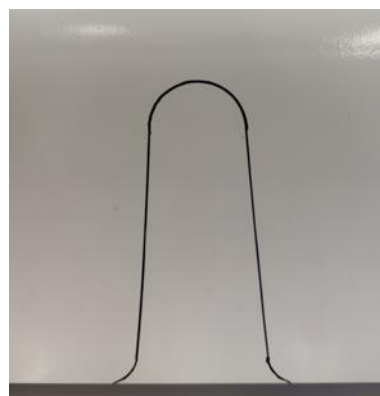
##### Step 3

Mark up on the *ELLE® Onshore* according to the dimensions in Figure 1.



**Note:** The dimensions in figure 2 can be used for all shapes of obstacles. Any obstacle in the installation area must have a  $5 +5/-0$  mm. distance to the *ELLE® Onshore*.

The cut-out in the *ELLE® Onshore* cannot be perpendicular to the edge of *ELLE® Onshore*. It must be made  $5 +5/-0$  mm. wider on each side towards the edge, and all inside or outside corners must be cut with a radius = minimum 10 mm.



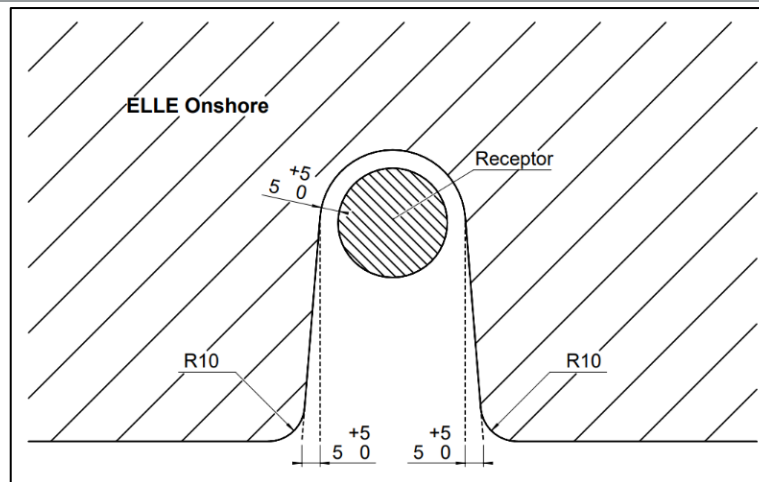


Figure 1

**End**

### 3.2 Punching & cutting

#### Step 1

Use an arch punch to make the circular hole around the lightning receptor.



**Note:** Suitable protective material is to be put underneath the *ELLE® Onshore* to avoid punching into the blade surface. Alternatively scissors or knife can be used if no arch punch is available.



#### Step 2

Use scissors to cut along the straight lines and along the radius in the corners.





**Step 3**

Continue installation according to:

*LE-I038-Application\_of\_ELLE\_Onshore Up-tower*  
or  
*LE-I058-Application\_of\_ELLE\_Onshore Factory*

**End**

## 4. Technical Support

### E-mail

[support@polytech.com](mailto:support@polytech.com)

Answers will be sent within one working day.

### Phone

+45 88 444 500

Available 8:00-17:00 CET.

---

Please include the following information in your support request:

- Product name.
- Product type.
- Serial number.
- Description of the problem, including detailed, high-resolution pictures.